

ARTECA 30 | THE PORTLAND PROJECT





MAKE YOUR  
OWN PATH.  
WANDER AND  
WONDER.



INSPIRED BY OREGON'S WILD AND RUGGED COAST, SECLUDED RIDGE LINES AND MEANDERING TRAILS. THIS COLLECTION STARTED WITH A ROAD TRIP, WITH OPENING OURSELVES UP TO THE WORLD WE SHARE IN FULL CONFIDENCE THAT NEW PATTERNS WOULD BE REVEALED, UNEARTHED, CREATED. THE RESULT IS LUXURIOUS METALLIC EFFECTS. SHARP LINEAR STRIATIONS THAT EMPHASIZE MOVEMENT FROM ONE PLANK TO THE NEXT. COLORS THAT WERE BORN ON THE COASTLINE: FROM THE RICHLY SATURATED TO NEUTRAL, NATURE-INSPIRED GRAYS AND BROWNS.



COVER: TIMBERLINE TRACE - Wake P219, MORAINÉ - Wake P218  
ABOVE: MORAINÉ - Twinflower P210, SUMMIT - Native 15906



FLUME - Copperpot P201





TIMBERLINE TRACE - Copperpot P203



MORAINE - Copperpot P202

COLORWAYS



BURNSIDE - Wake P216



FLUME - Wake P217



MORAINE - Wake P218



TIMBERLINE TRACE - Wake P219

*Images show multiple planks*

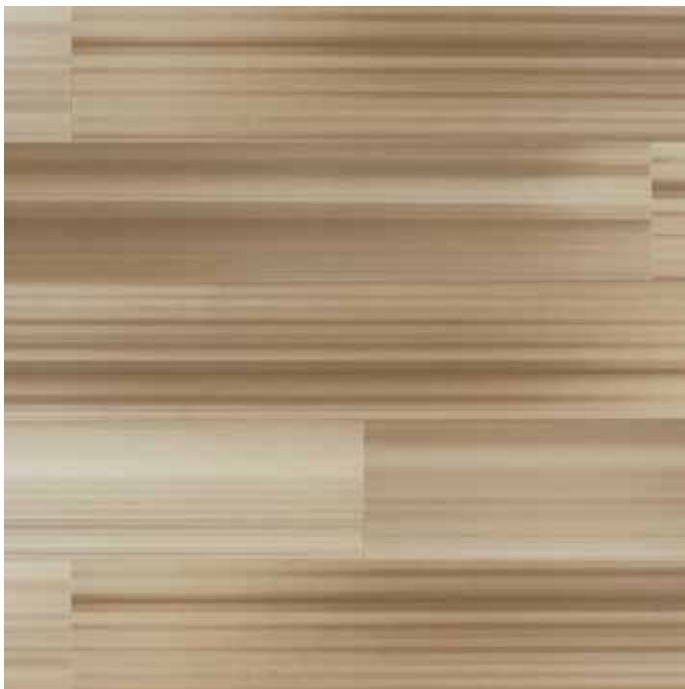




BURNSIDE - Drifter P212



FLUME - Drifter P213



MORAINE - Drifter P214



TIMBERLINE TRACE - Drifter P215

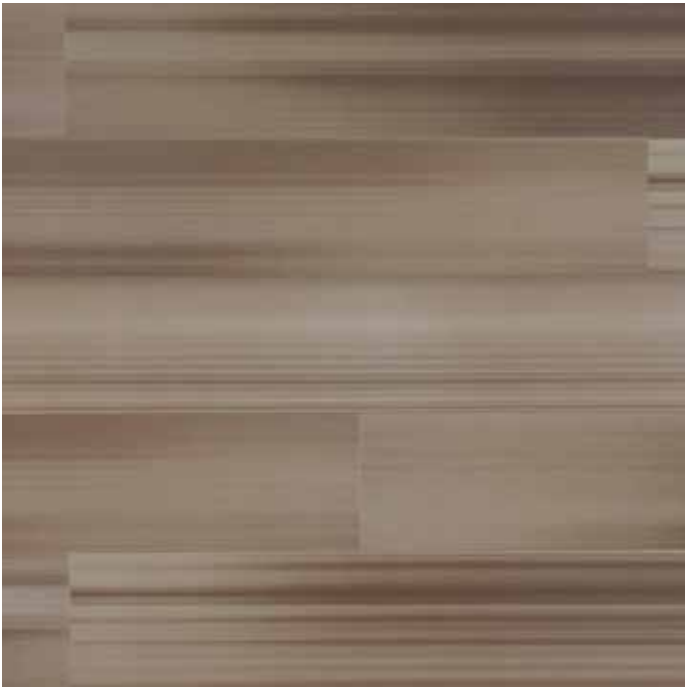
*Images show multiple planks*



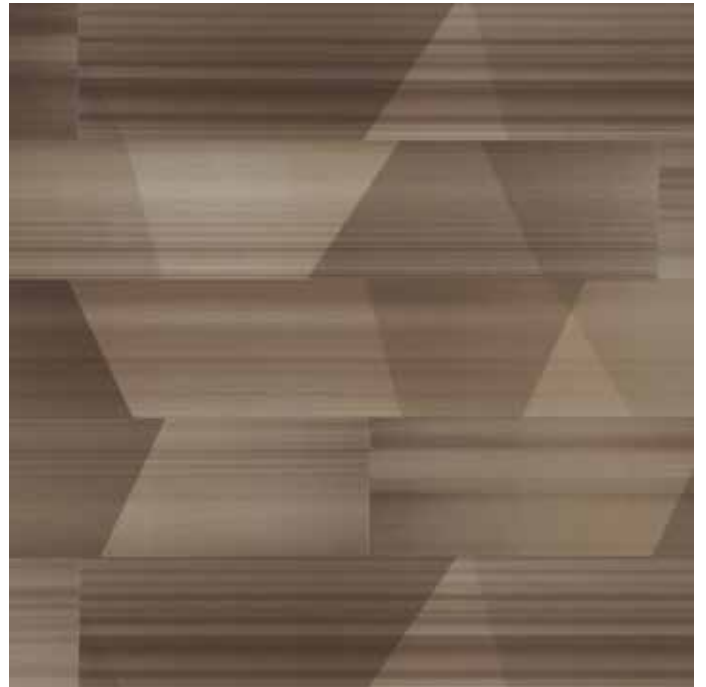
BURNSIDE - Frontier P204



FLUME - Frontier P205

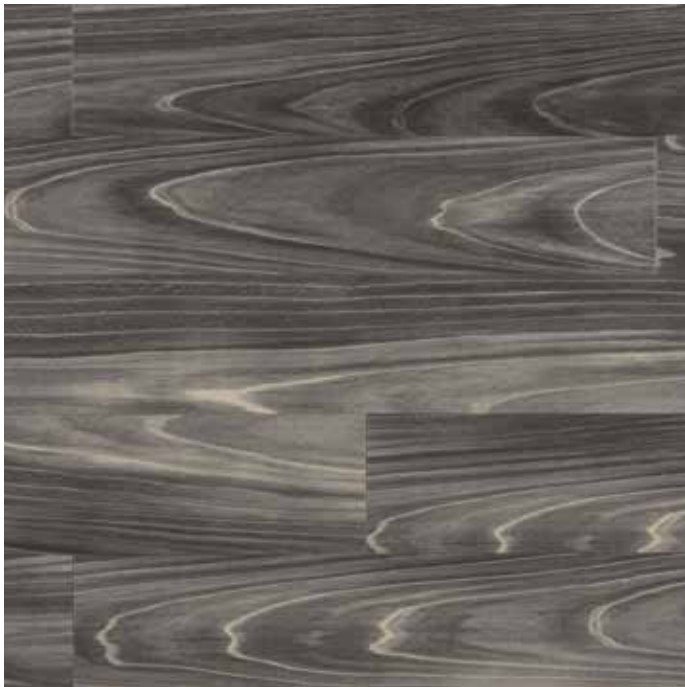


MORaine - Frontier P206



TIMBERLINE TRACE - Frontier P207

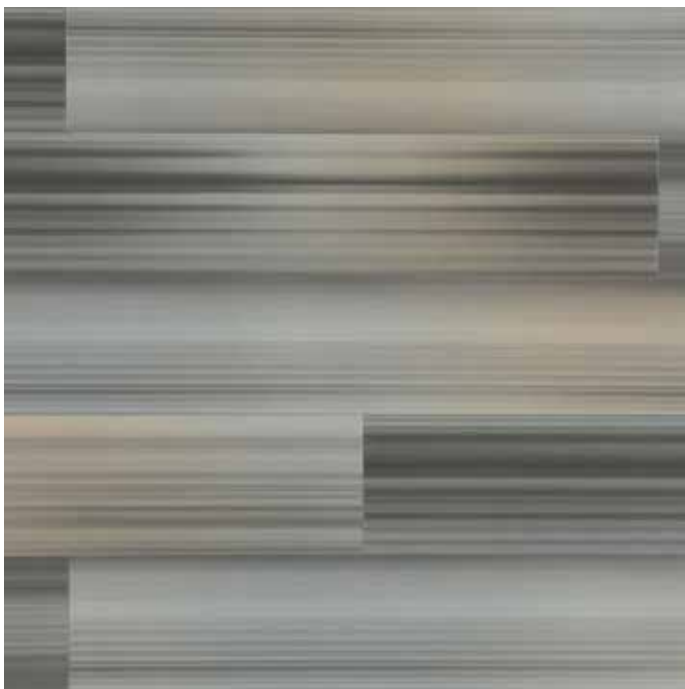
*Images show multiple planks*



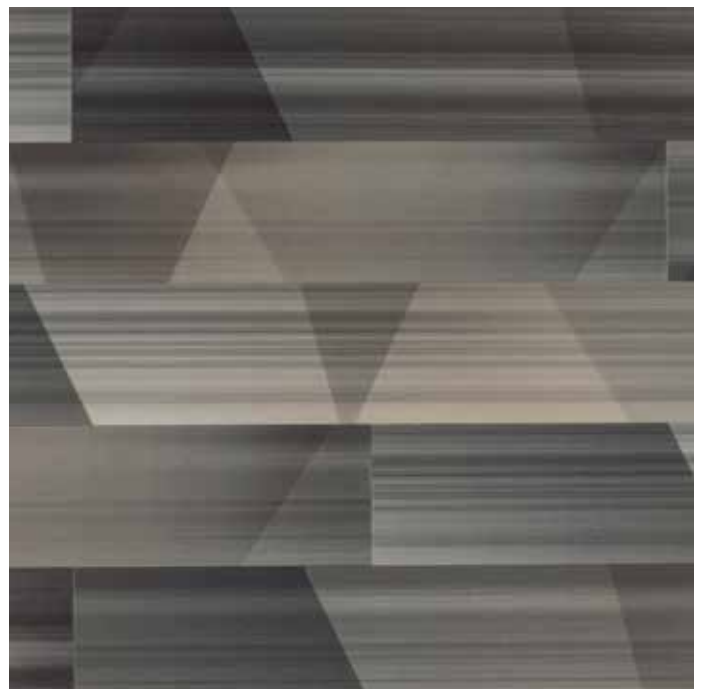
BURNSIDE - Wayfarer P220



FLUME - Wayfarer P221



MORAINE - Wayfarer P222



TIMBERLINE TRACE - Wayfarer P223

*Images show multiple planks*



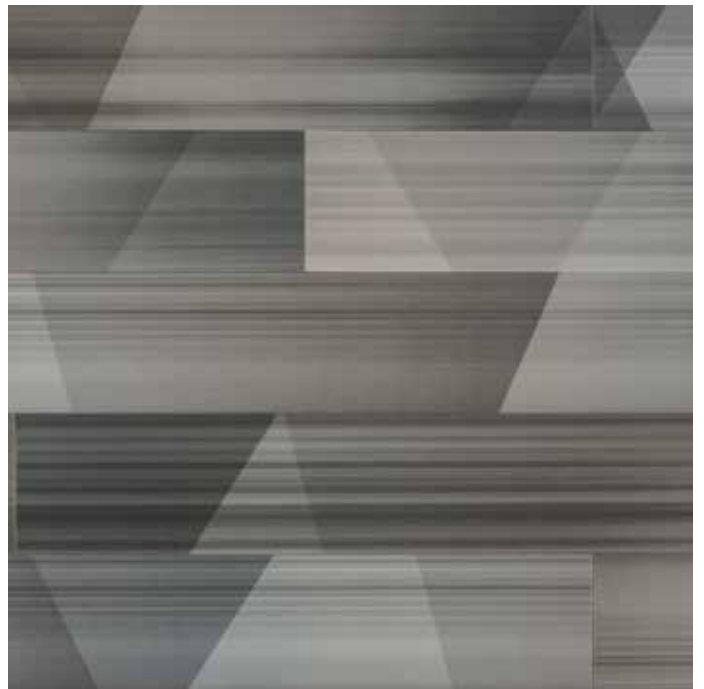
BURNSIDE - Copperpot P200



FLUME - Copperpot P201

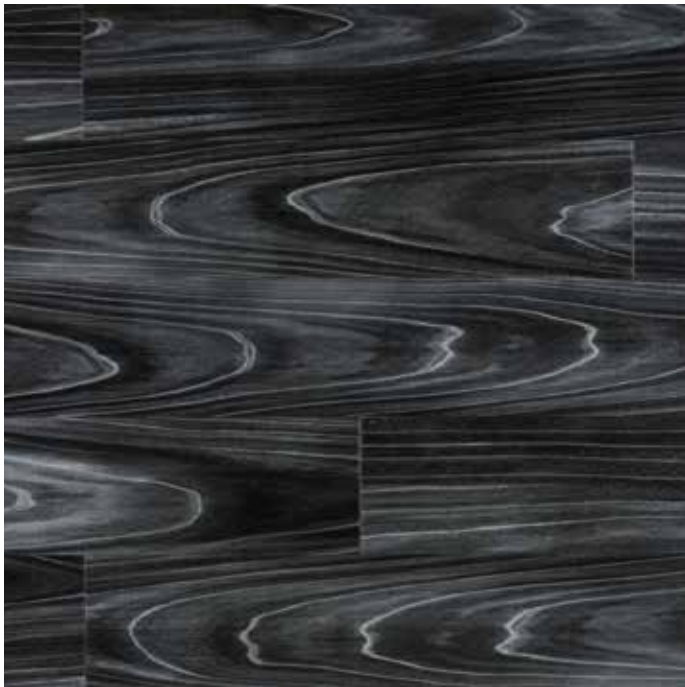


MORaine - Copperpot P202

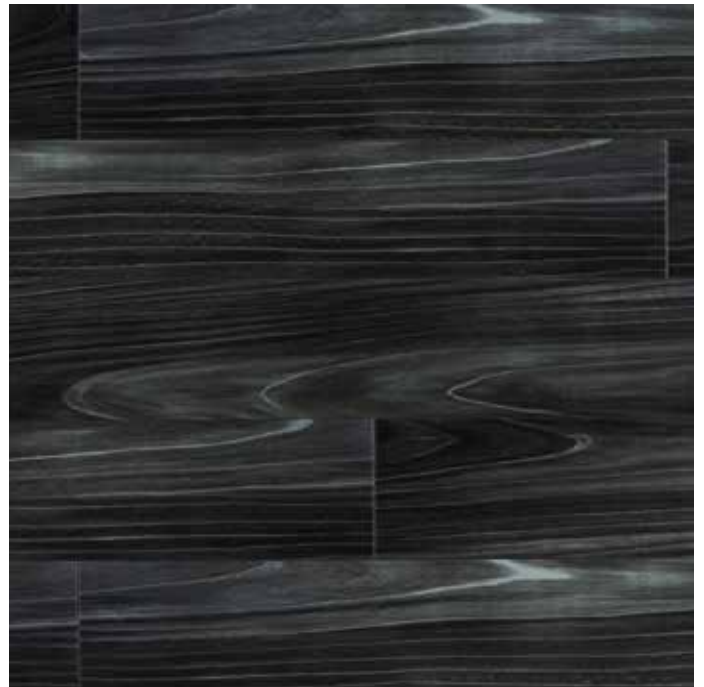


TIMBERLINE TRACE - Copperpot P203

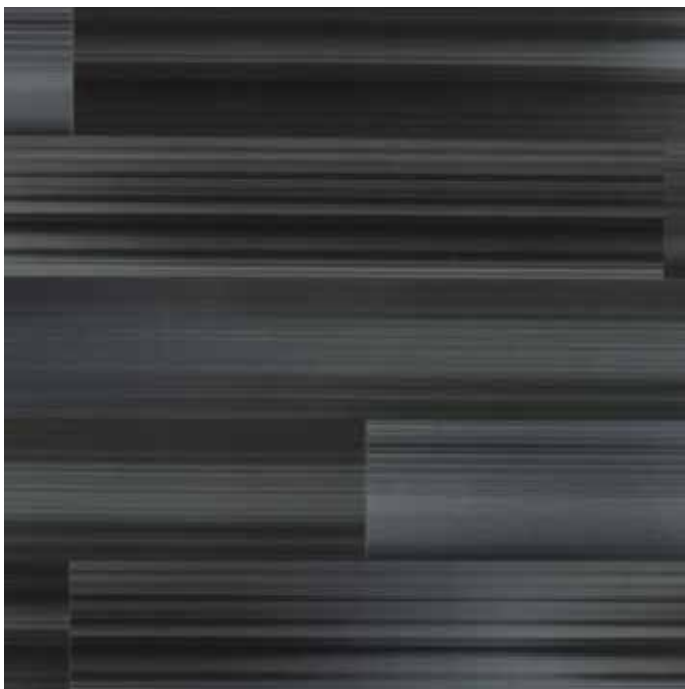
*Images show multiple planks*



BURNSIDE - Twinflower P208



FLUME - Twinflower P209



MORAINE - Twinflower P210



TIMBERLINE TRACE - Twinflower P211

*Images show multiple planks*



QUANTUM GUARD®  
*elite*

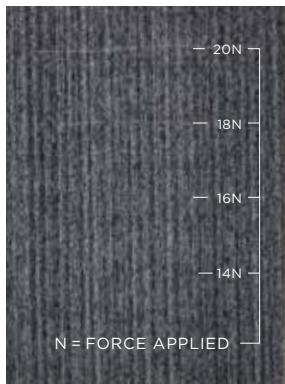
## Success Is in Our Science

Introducing an advancement in our proven Quantum Guard finish: Quantum Guard Elite. This patent pending technology provides the ultimate solution for all aspects of LVT performance.

- Highest scratch resistance in the industry
- Engineered for best-in-class dimensional stability
- Superior impact resistance
- Cuts cleanly for highest quality installation
- Easy no-polish maintenance significantly reduces overall life cycle cost and total cost of ownership
- Advanced stain resistance

## OUTPERFORMS IN SCRATCH RESISTANCE

Quantum Guard Elite



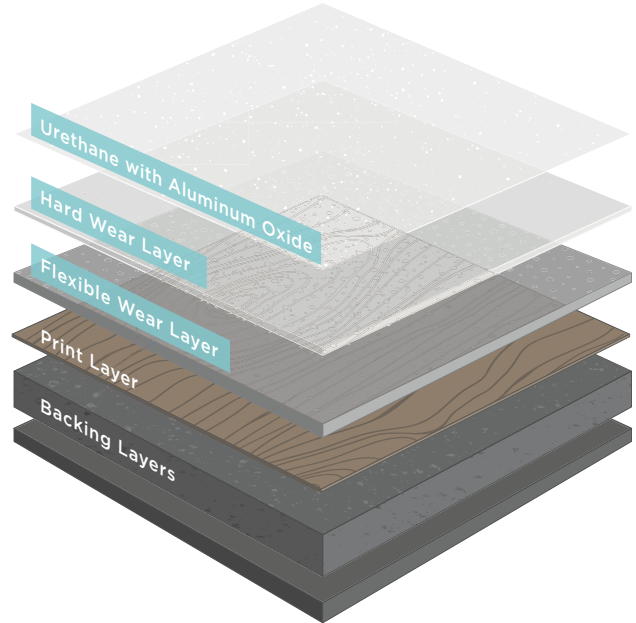
Leading Competitor



With a patent-pending two-part wear layer and aluminum oxide infused top coat, Quantum Guard Elite offers superior scratch resistance vs. the leading competitor.

## COMPLETE MULTI-LAYERED PROTECTION

Quantum Guard Elite combines a hard wear layer and a flexible wear layer for superior durability with the added protection of our proprietary aluminum oxide technology.

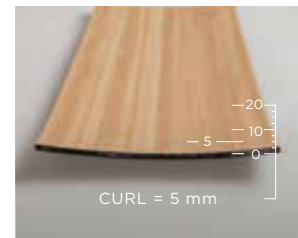


## BEST-IN-CLASS DIMENSIONAL STABILITY

Quantum Guard Elite



Leading Competitor



Commercial LVT with Quantum Guard Elite is fully engineered to offer the perfect balance of hardness and flexibility, which helps prevent product failures in commercial environments.






## WARRANTED TO WORK

This product is backed by our Limited 20 Year Commercial Warranty and Limited 20 Year Quantum Guard Elite Wear Warranty.








## PERFORMANCE AND FEATURES

	<p>AVAILABLE SIZE</p>	<p>6" x 48"</p>
	<p>WARRANTY</p>	<p>This product is backed by our Limited 20 Year Commercial Warranty and Limited 20 Year Quantum Guard® Elite Wear Warranty.</p>
	<p>QUANTUM GUARD® ELITE</p>	<p>A patent-pending advancement in our proven Quantum Guard technology, Quantum Guard Elite provides industry-leading scratch resistance, best-in-class dimensional stability, superior impact resistance and more. With a unique construction and our proprietary aluminum oxide technology, Quantum Guard Elite delivers the ultimate high-performance LVT.</p>
	<p>QUICKSTIX®</p>	<p>LVT with pre-applied adhesive, reducing time and labor required to install the flooring. QuickStix floors can be used immediately after installation, even in extreme moisture areas.</p>
	<p>RAPIDLY RENEWABLE CONTENT</p>	<p>Contains 2% rapidly renewable resource content.</p>

## SUSTAINABILITY

	<p>ENERGY LEADERSHIP</p>	<p>With one of the largest solar arrays in the flooring industry (3.3 acres in Salem NJ) and ambitious goals to improve energy efficiency by 25% over ten years, we have an ongoing partnership with the Department of Energy to lead manufacturing into smarter energy use, as well as to reduce related carbon emissions.</p>
	<p>WATER REDUCTION</p>	<p>Water is a precious natural resource and a key component in manufacturing. By investing in technology and a continual emphasis on efficiency and lean manufacturing, we have reduced our water use by 30% company-wide since 2007. We also actively help protect wetlands in the communities where we make flooring.</p>
	<p>SOLAR ARRAY</p>	<p>At 3.3 acres, we have one of the largest solar arrays in the flooring industry generating 1,000,000 kilowatt hours annually.</p>
	<p>US MANUFACTURING</p>	<p>Mannington is a fourth generation, family-owned company deeply committed to U.S. manufacturing. We make flooring in seven communities across the U.S., allowing us to provide the highest levels of service and quality in the industry, while supporting local economies and crafting quality, American-made products.</p>
	<p>ISO 14001</p>	<p>ISO 14001 is a global environmental standard that provides a system for continual improvement in environmental performance.</p>

## SUSTAINABILITY

	<p>LEED</p>	<p>Mannington Commercial products may contribute to multiple LEED credits.</p>
	<p>3RD PARTY CERTIFICATIONS</p>	<p>Certifications help navigate the world of green marketing claims. So we invest in ISO-14001 and environmentally preferable product certifications including NSF/ANSI-140, NSF/ANSI-332, FloorScore, and Green Label Plus. All of our products may contribute to multiple LEED and Green Globe credits.</p>
	<p>ENVIRONMENTAL PRODUCT DECLARATION</p>	<p>EPDs communicate the comprehensive life cycle assessment of a product's environmental impact and facilitate transparency. Our EPDs conform to international standards and are 3rd party verified by ThinkStep and Underwriters Laboratory.</p>
	<p>PURPLE MARTINS</p>	<p>In the mid-1980s, we began attracting migrating birds called Purple Martins to our New Jersey manufacturing campus as a more natural alternative to the use of pesticides. This "Purple Martin Project" has proven to be an incredibly environmentally friendly and cost effective way to control insects. Our employees are engaged in the banding and tracking of the birds.</p>
	<p>HONEYBEES</p>	<p>In 2009, as part of an effort to show how an industrial enterprise can co-exist with the agricultural &amp; farming community and positively contribute to both, Mannington's New Jersey corporate site began to house honeybees. We now have 5 hives in Salem, NJ and 4 in Eustis, FL. The honeybees are thriving and each year we are able to enjoy and share the honey produced.</p>
	<p>CE MARK</p>	<p>Certifies that a product has met EU health, safety, and environmental requirements, which ensure consumer safety. Manufacturers in the European Union (EU) and abroad must meet CE marking requirements where applicable in order to market their products in Europe.</p>
	<p>CLIMATE REGISTRY</p>	<p>Mannington is dedicated to reducing our greenhouse gas emissions by 25% over 10 years. Since 2007, a 10% reduction can be attributed to energy efficiencies, process efficiencies, and use of renewable energy. Additional information can be found on <a href="http://theclimateregistry.org">theclimateregistry.org</a>.</p>





## SPECIFICATIONS - THE PORTLAND PROJECT

	CONSTRUCTION	LVT with micro-beveled edges
	AVAILABLE SIZE	6" x 48" (152 x 1219 mm)
	WEAR LAYER THICKNESS	30 mil (0.76 mm)
	OVERALL THICKNESS	0.098" (2.5mm)
	PIECES PER CARTON	24
	COVERAGE PER CARTON	48 sq. ft.
	QUANTUM GUARD® ELITE	A patent-pending advancement in our proven Quantum Guard technology, Quantum Guard Elite provides industry-leading scratch resistance, best-in-class dimensional stability, superior impact resistance and more. With a unique construction and our proprietary aluminum oxide technology, Quantum Guard Elite delivers the ultimate high-performance LVT.
	QUICKSTIX®	LVT with pre-applied adhesive, reducing time and labor required to install the flooring. QuickStix floors can be used immediately after installation, even in extreme moisture areas.
	WARRANTY	This product is backed by our Limited 20 Year Commercial Warranty and Limited 20 Year Quantum Guard® Elite Wear Warranty.
	RAPIDLY RENEWABLE CONTENT	Contains 2% rapidly renewable resource content.
	3RD PARTY CERTIFICATIONS	FloorScore, Industry wide 3rd party Type III EPD (Environmental Product Declaration)
	LEED	Mannington Commercial products may contribute to multiple LEED credits.
	US MANUFACTURING	Mannington is a fourth generation, family-owned company deeply committed to U.S. manufacturing. We make flooring in seven communities across the U.S., allowing us to provide the highest levels of service and quality in the industry, while supporting local economies and crafting quality, American-made products.
	STATIC LOAD LIMIT	750 PSI
	SPECIFICATIONS (ASTM F1700)	Class III, Type B
	HEAT STABILITY (ASTM F1514)	Passes
	STAIN & CHEMICAL RESISTANCE (ASTM F925)	Passes
	HUD/FHA REQUIREMENTS	Exceeds
	AMERICANS WITH DISABILITIES ACT GUIDELINES (ADAG)	Meets or exceeds ADA Guidelines
	COEFFICIENT OF FRICTION (COF)	≥ 0.5 Leather; 0.6 Rubber
	FLOORING RADIANT PANEL (ASTM E648)	≥ 0.45 watts/cm <sup>2</sup> , Passes (Class 1)
	N.B.S. SMOKE CHAMBER (ASTM E662)	< 450-Passes
	INSTALLATION ADHESIVE	Porous & Non-Porous Substrates: Arteca Pressure Sensitive, Full Spread / RH 90%, MVER 8, pH 5-9; Arteca 373, Full Spread / RH 80%, MVER 5, pH 7-10; XpressStep for LVT Spray Adhesive / RH 90%, MVER 8, pH 11; XpressStep Premium Spray Adhesive / RH 93%, MVER 10, pH 12. Non-Porous Substrates or where higher performance is required: Arteca Universal, Full Spread, 2 Part Urethane / RH 80%, MVER 5, pH 7-10. Under Hospital Beds and Heavy Rolling Loads: Arteca Universal, Full Spread, 2 Part Urethane / RH 80%, MVER 5, pH 7-10; XpressStep for LVT Spray Adhesive / RH 90%, MVER 8, pH 11; XpressStep Premium Spray Adhesive / RH 93%, MVER 10, pH 12. QuickStix® pre-applied adhesive / RH 99%, MVER 18, pH 12.

For complete specifications, visit our website, [manningtoncommercial.com](http://manningtoncommercial.com).

